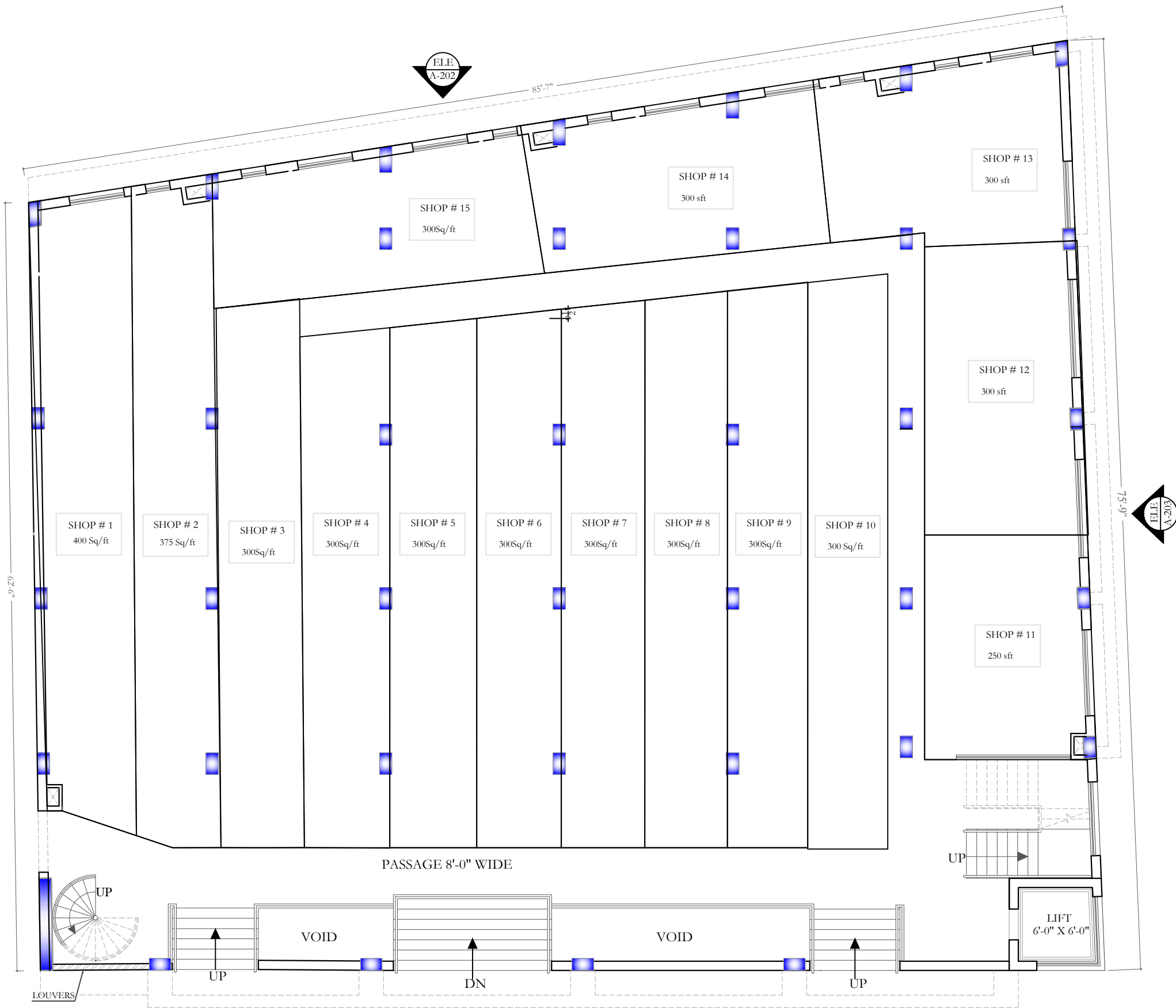




GROUND FLOOR PLAN (LOWER PORTION)

Total Area 5928.00 sft



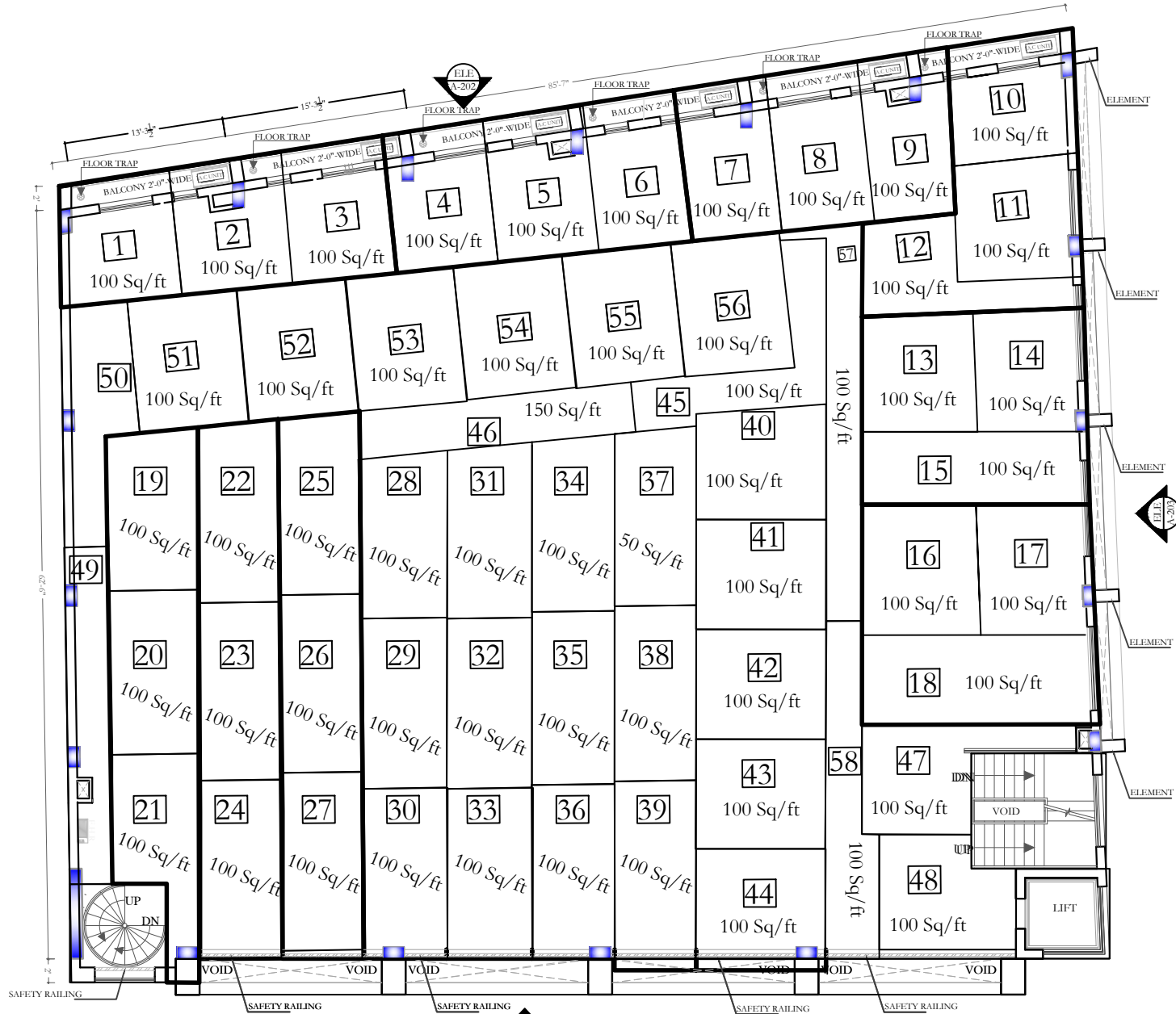


GROUND FLOOR PLAN

(Total Area 5698.00 sft.)

±0'-0"
R.L.

ELEV
A-201

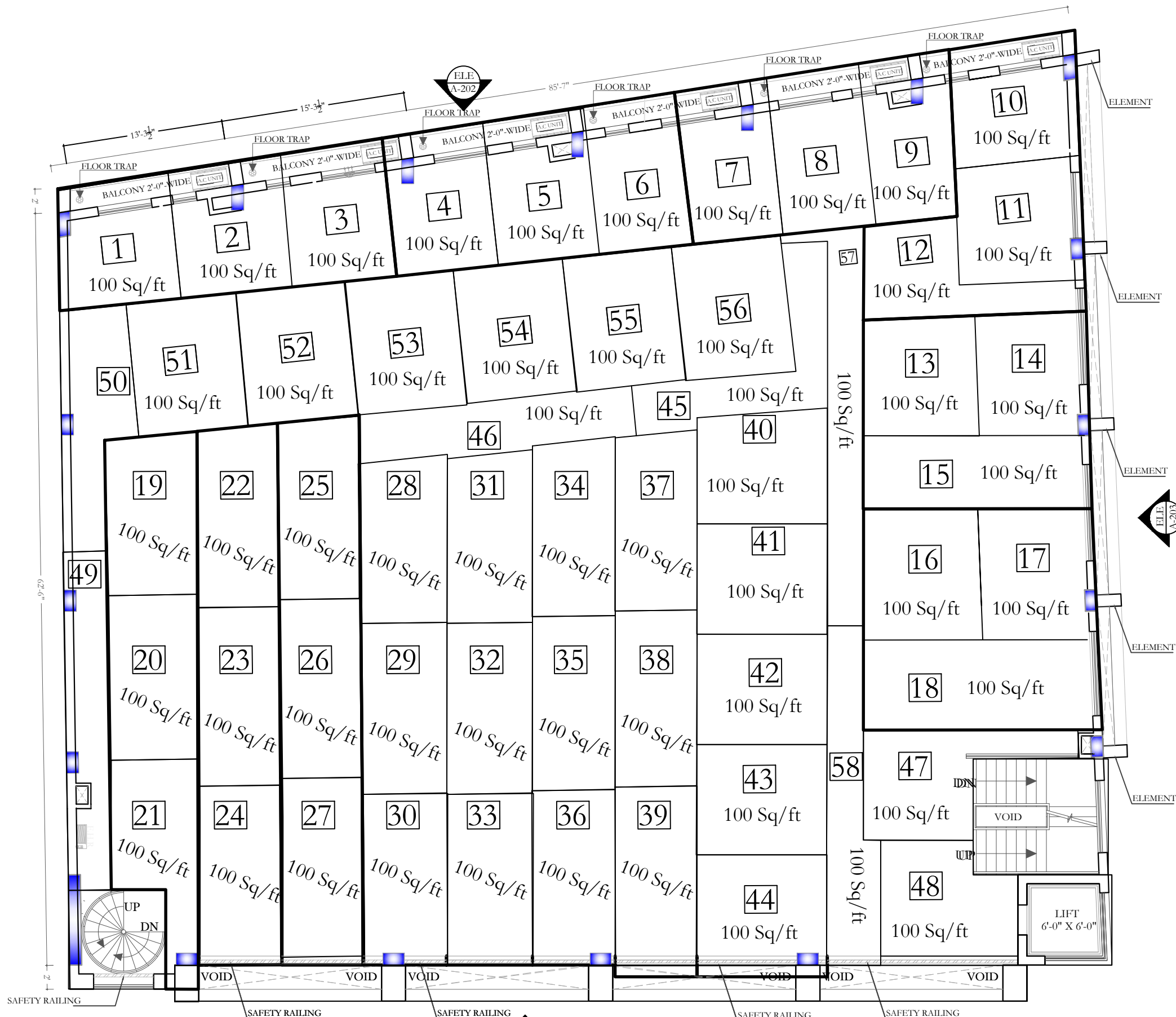


MEZZININE FLOOR PLAN

(6273.00 square ft.)

No of Units = 58



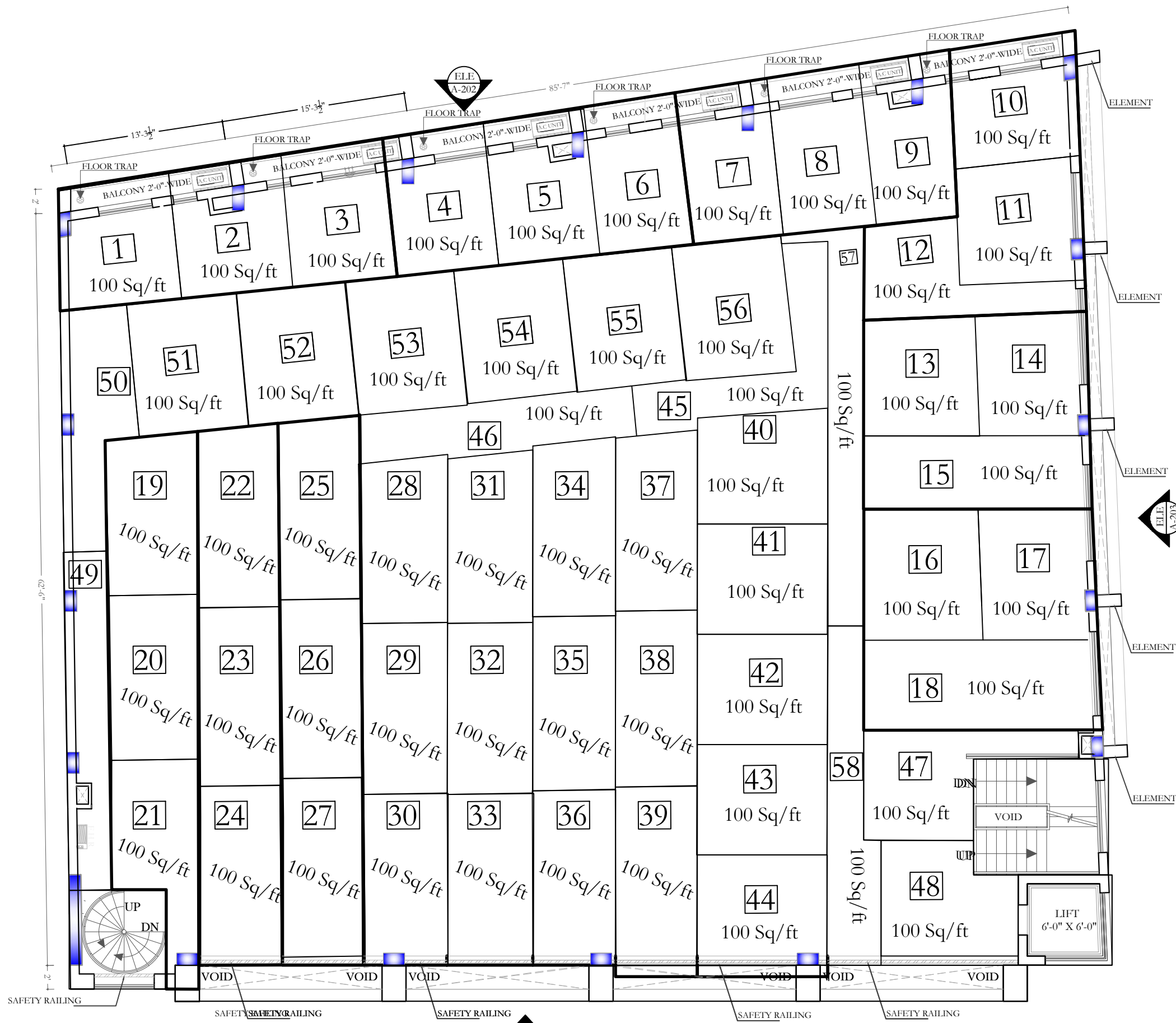


FIRST FLOOR PLAN

(6273.00 square ft.)

No of Units = 58



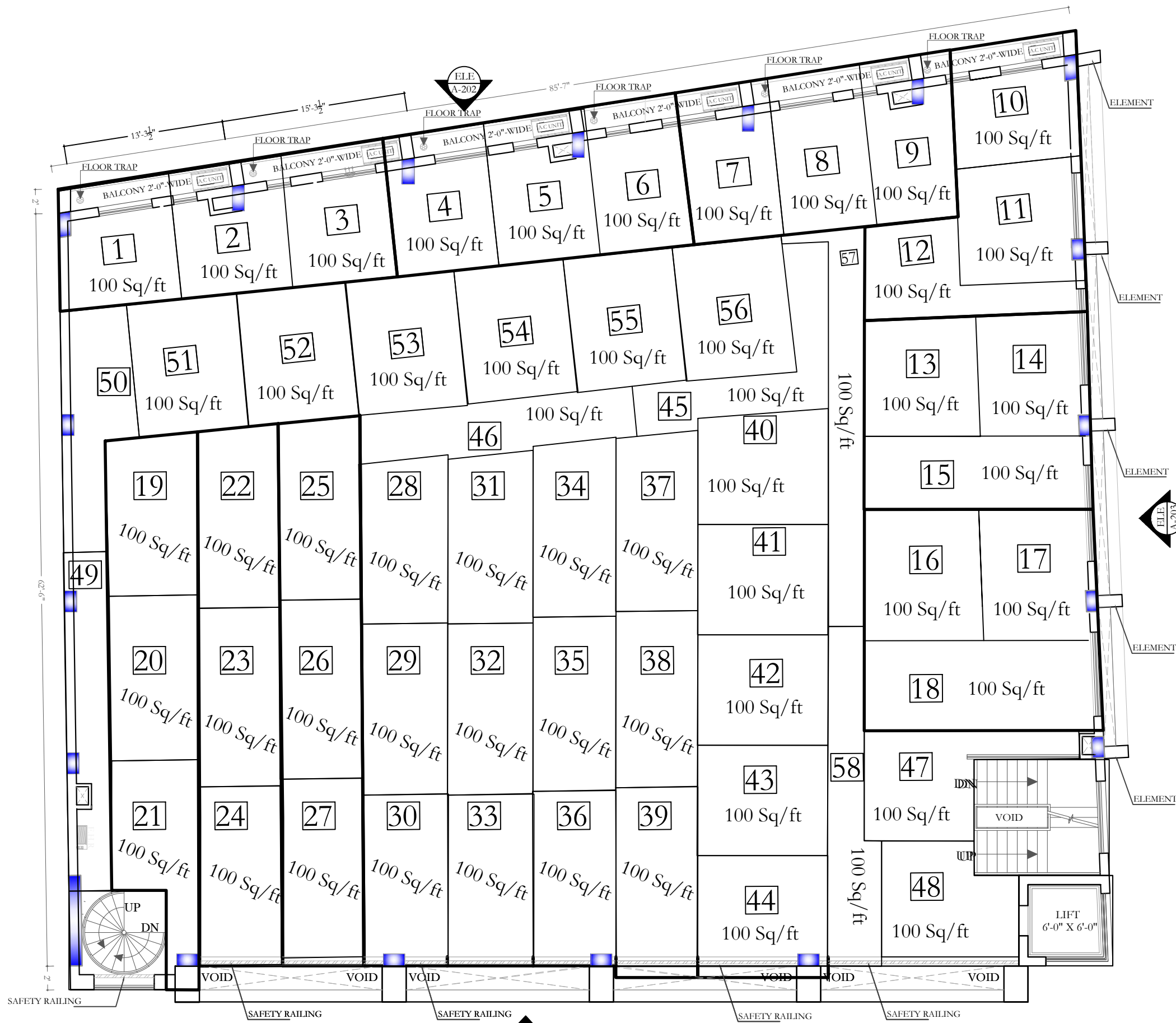


2ND FLOOR PLAN

(6273.00 square ft.)

No of Units = 58





3RD FLOOR PLAN

(6273.00 square ft.)

No of Units = 58

